

# SVENMIX.D DRY POLYMER MIXING SYSTEM

The SVENMIX.D is a precise yet simple system for making down dry polymer. The polymer may be powder, granular or bead. The polymer is fed from the sealed hopper by way of the VFD controlled volumetric feeder. The polymer flows into the Washdown Funnel, where the initial wetting and dispersion occurs. The Washdown Funnel is connected to a jet eductor, which conveys the solution to the Mixing/Aging Tank(s) where the polymer solubilization is completed and the solution is aged. The rapid dispersion and solubilization of the polymer as it flows into the Washdown Funnel and through the Jet Eductors allows for short aging time to completely unwind the polymer. The SVENMIX.D is flexible system that can be configured for any application or project.



Polymer feed into the Washdown Funnel and being drawn through the Jet Eductor



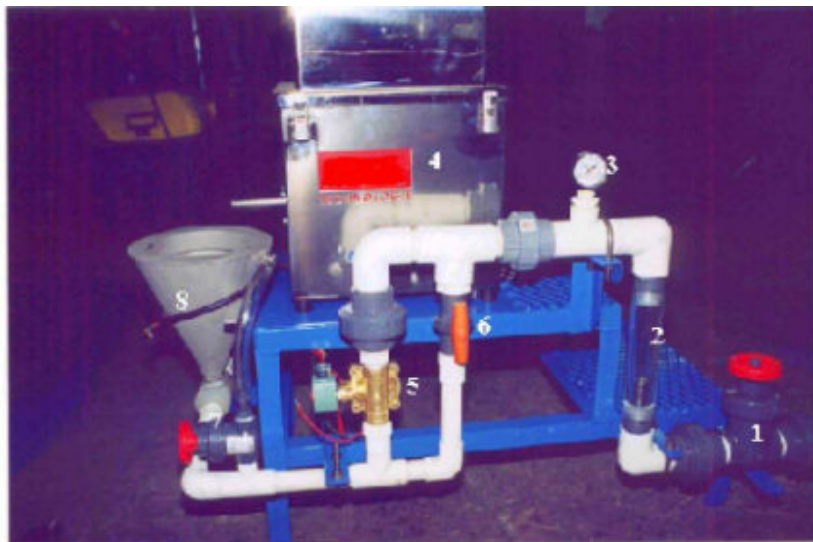
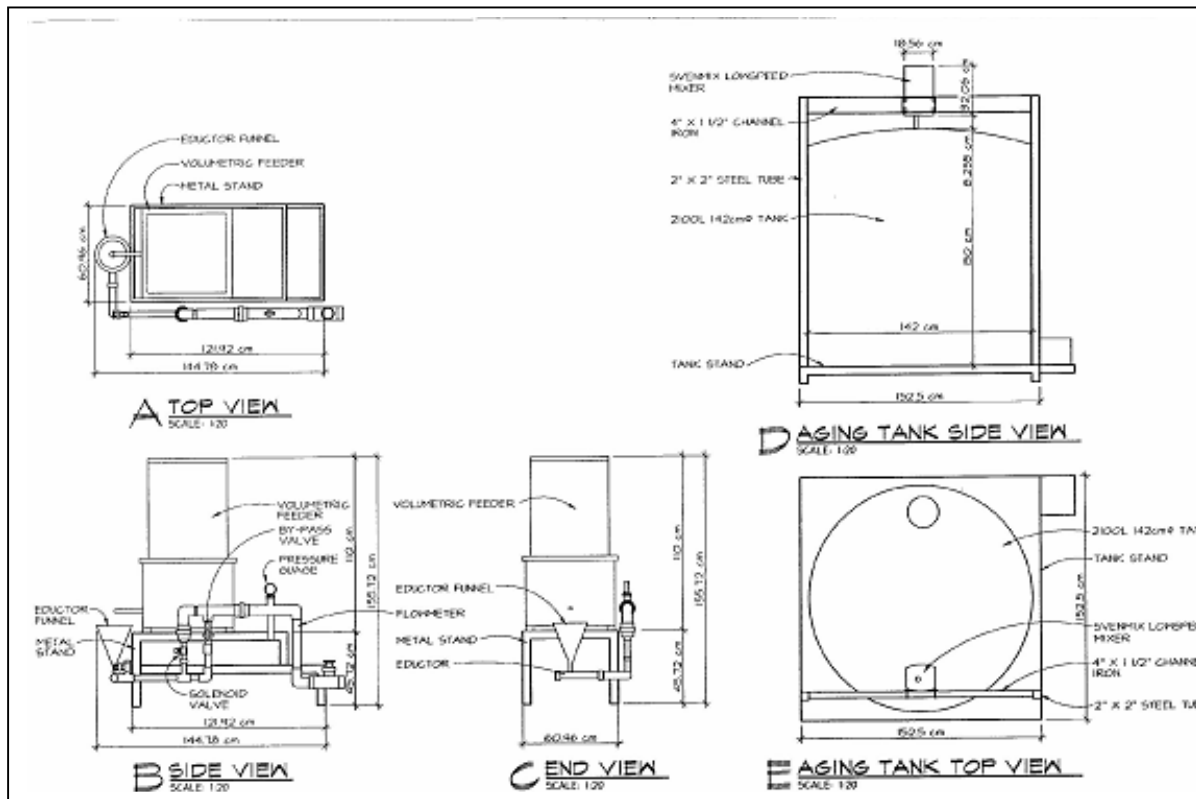
Pictured in the background left is a SVENMIX.D 3325. In the foreground right is an 1100 gal. tank with a SVENMIX LS Mixer. The system automatically makes a 0.15% polymer solution on demand. An ultrasonic level controller in the tank initiates the process. The solution is fed to a belt thickener by the PC pump next to the tank.

[www.svenviro.com](http://www.svenviro.com)

1.800.658.3955

[sven@svenviro.com](mailto:sven@svenviro.com)

# SVENMIX.D



- |                                |                          |
|--------------------------------|--------------------------|
| 1] Flow Control/Shut-off Valve | 5] Solenoid Valve        |
| 2] Flowmeter                   | 6] By-Pass Valve         |
| 3] Pressure Gauge              | 7] Washdown Water Valve  |
| 4] Volumetric Feeder           | 8] Eductor/Mixing Funnel |

[www.svenviro.com](http://www.svenviro.com)

1.800.658.3955

[sven@svenviro.com](mailto:sven@svenviro.com)